



AA1: Stanislaus County with Branches

AA1 Stanislaus County

Branches 2023

CRA Eligibility

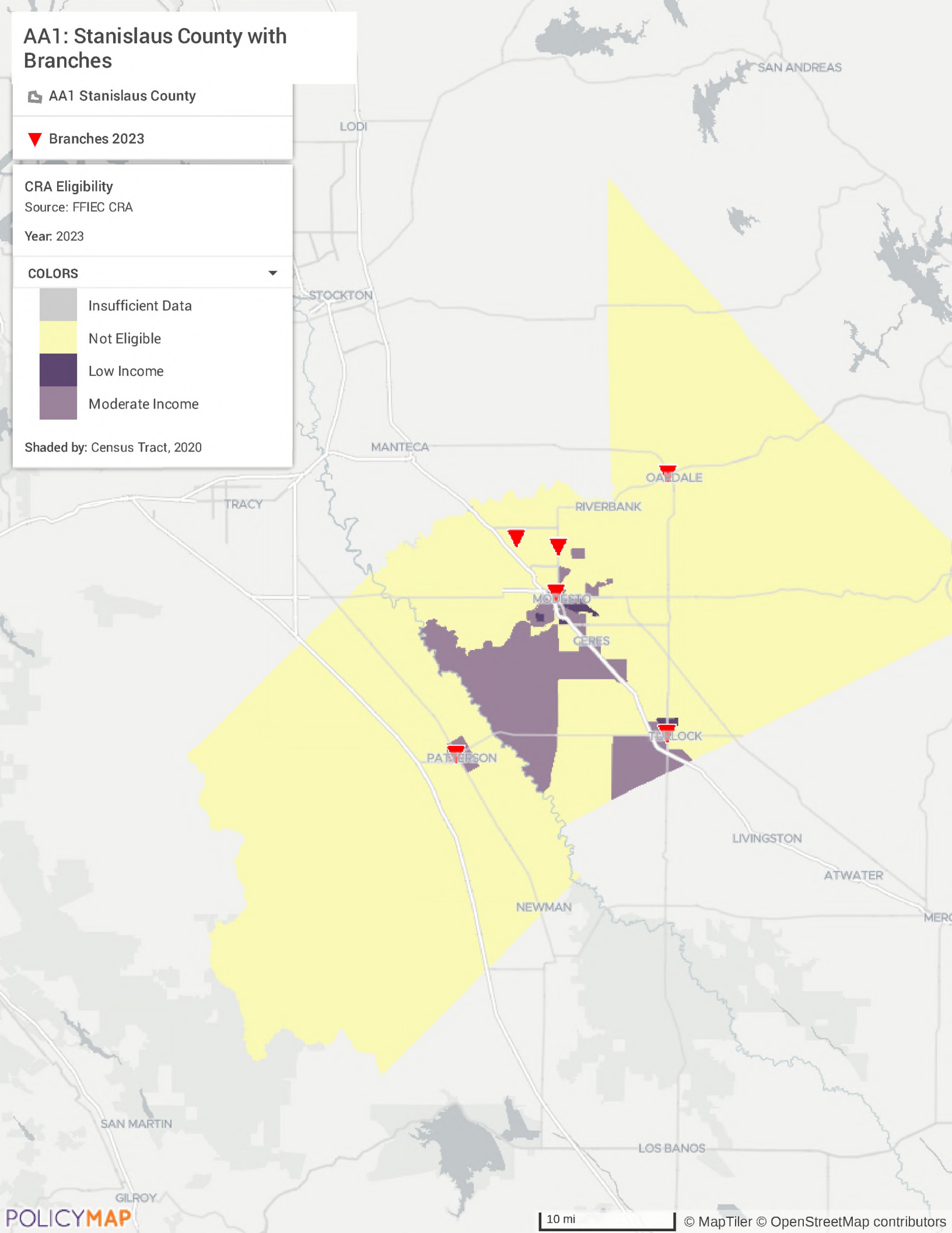
Source: FFIEC CRA

Year: 2023

COLORS

- Insufficient Data
- Not Eligible
- Low Income
- Moderate Income

Shaded by: Census Tract, 2020



AA2: San Joaquin County with Branches

AA2 San Joaquin County

Branches 2023

CRA Eligibility

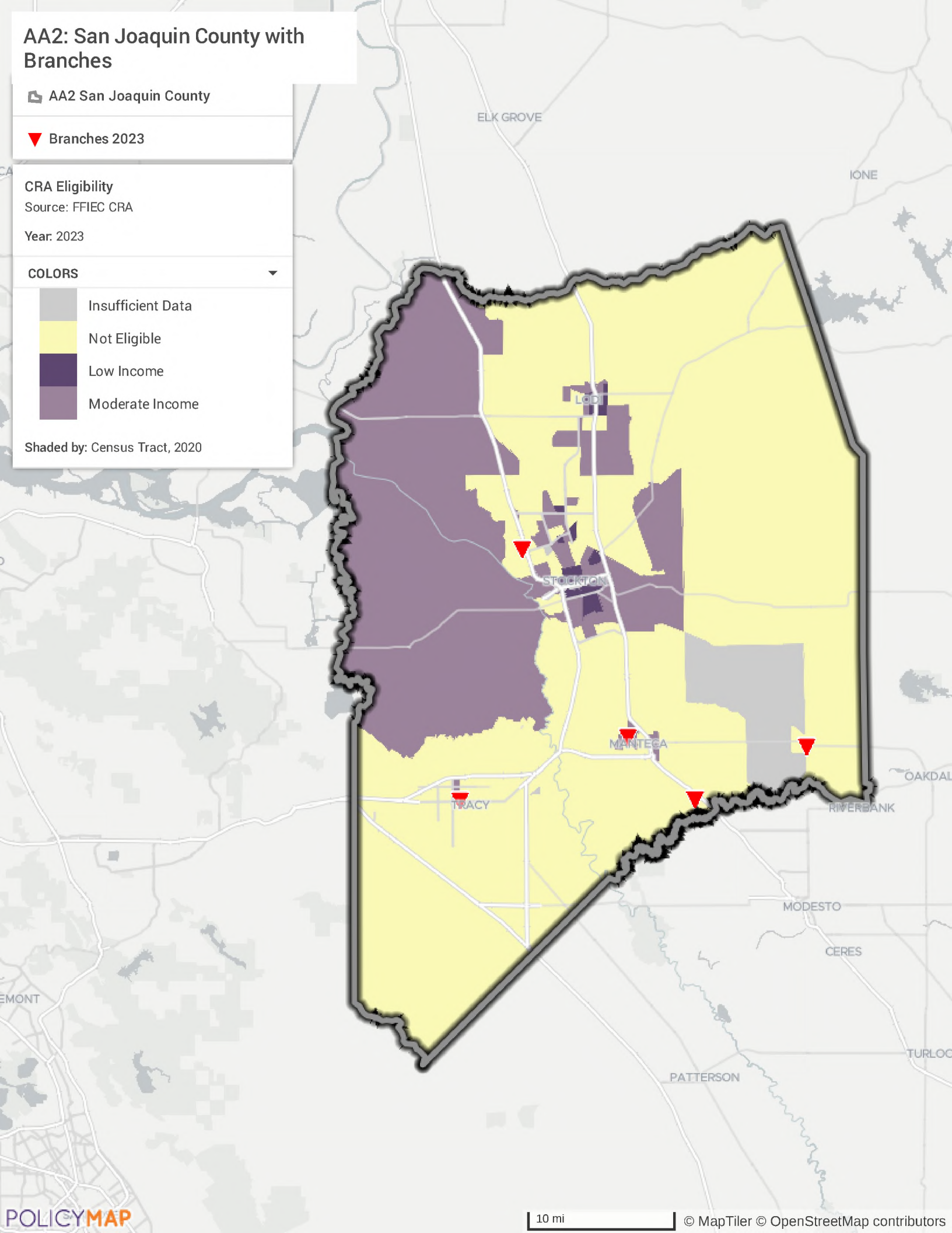
Source: FFIEC CRA

Year: 2023

COLORS

- Insufficient Data
- Not Eligible
- Low Income
- Moderate Income

Shaded by: Census Tract, 2020



AA3: Inyo, Mono, Tuolumne Counties with Branches

AA3 IMT Counties

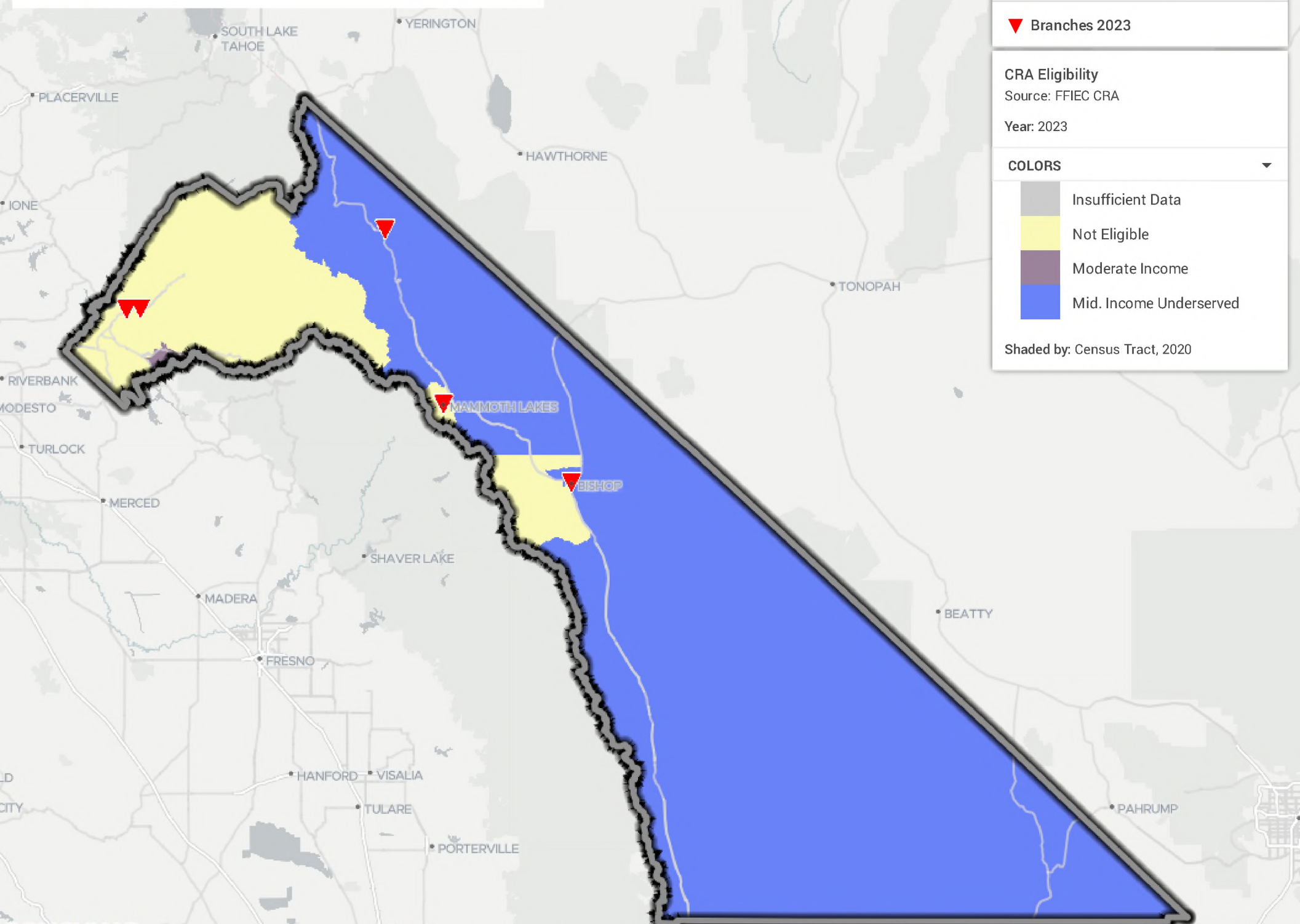
▼ Branches 2023

CRA Eligibility
Source: FFIEC CRA
Year: 2023

COLORS

- Insufficient Data
- Not Eligible
- Moderate Income
- Mid. Income Underserved

Shaded by: Census Tract, 2020



AA4: Sacramento County with Branches

AA4 Sacramento County

Branches 2023

CRA Eligibility

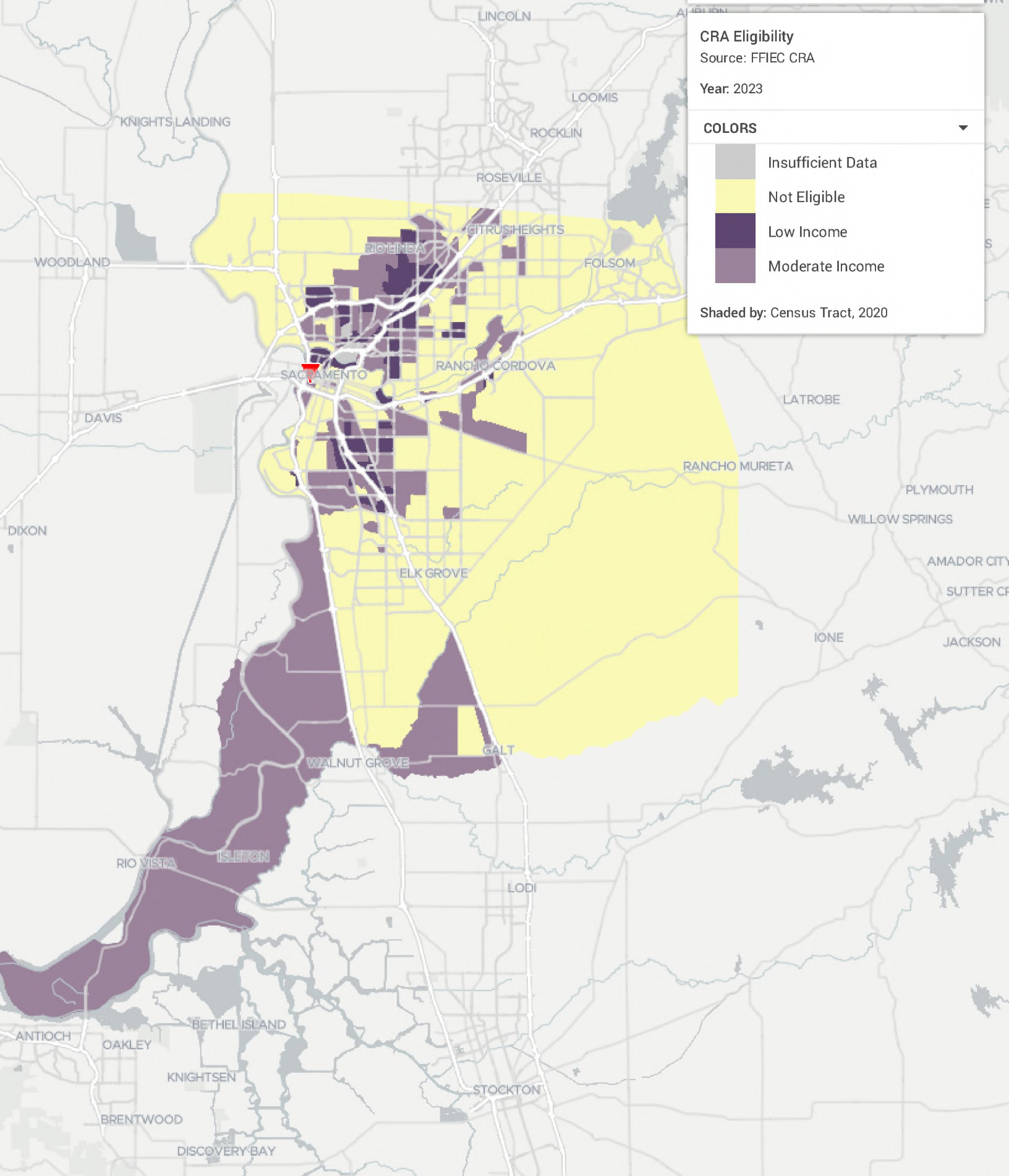
Source: FFIEC CRA

Year: 2023

COLORS

- Insufficient Data
- Not Eligible
- Low Income
- Moderate Income

Shaded by: Census Tract, 2020



AA5: PlacerCounty with Branches

AA5 Placer County

Branches 2023

CRA Eligibility

Source: FFIEC CRA

Year: 2023

COLORS

- Insufficient Data
- Not Eligible
- Low Income
- Moderate Income

Shaded by: Census Tract, 2020

